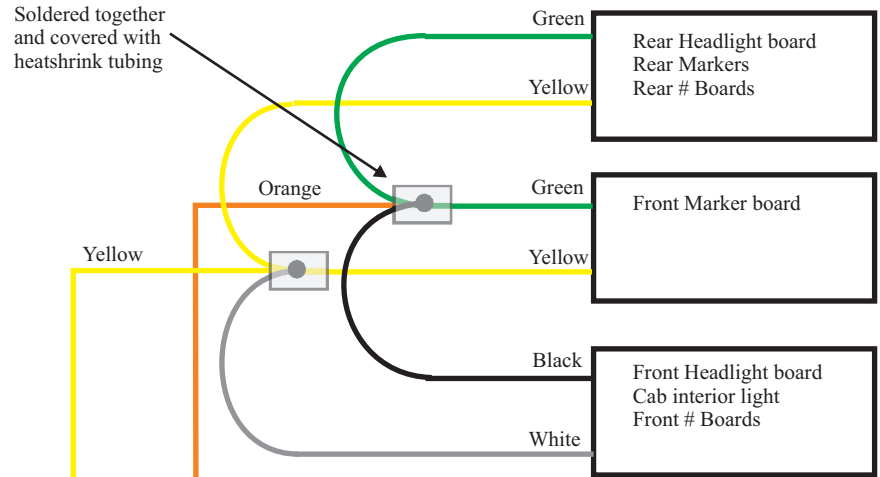


GP38-2 Old Style Chassis Wiring that uses 2-conductor plugs having 0.1 inch centers

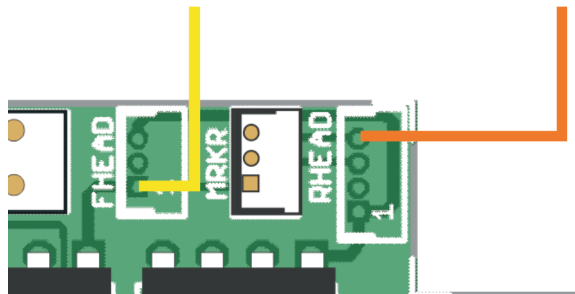
Before final assembly, verify that markers and headlights are working properly for the direction indicated on the throttle.

Use F0 to enable lights. Throttle direction determines which lights are on and color of the marker lights.

	<u>Forward</u>	<u>Reverse</u>
Front Headlights	On	Off
Cab interior	On	On
Front number boards	On	On
Front marker lights	Green	Red
Rear Headlights	Off	On
Rear number boards	On	On
Rear marker lights	Red	Green

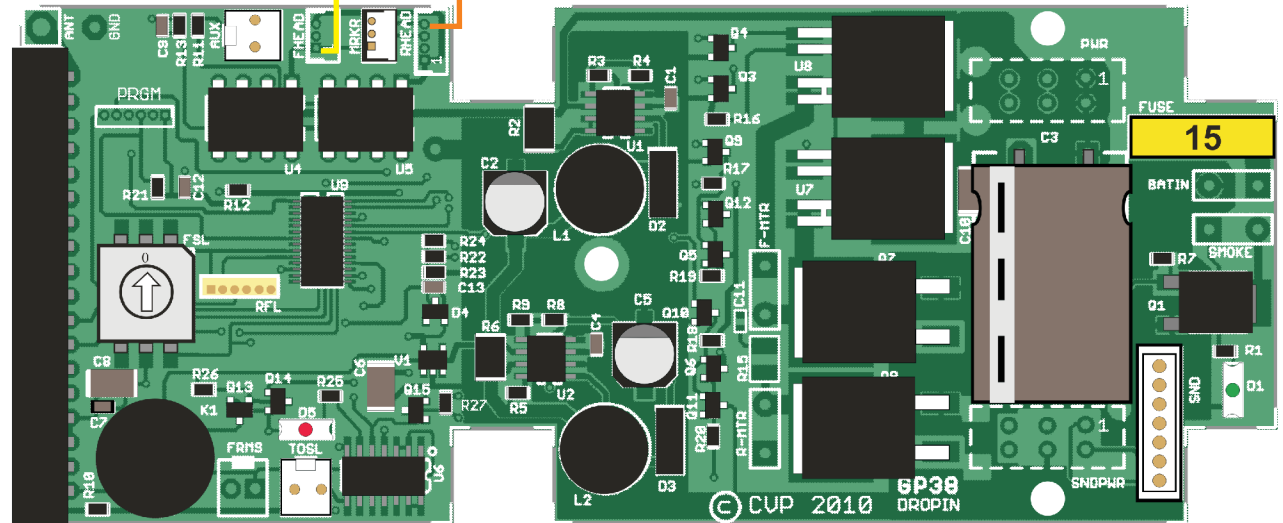


Cut off white plugs from circuit boards leaving the wire attached. Connect the wires together as shown. After Drop-In is mounted, trim the Orange/Yellow pair from the Drop-In to length and connect to the lamp boards as shown. Solder all joints and insulate with tape or heatshrink tubing.



Closeup of wire hookup

FWD	FHEAD = V+	RHEAD = 0V
REV	FHEAD = 0	RHEAD = V+
OFF	FHEAD = 0	RHEAD = 0



Modified GP38 Drop-In

## Non-Standard GP38 chassis lighting hookup

r2 GP38 - modified  
for nonstandard loco  
2-3-13  
©2010-2013 CVP

**CVP PRODUCTS**  
P.O. Box 835772  
Richardson, TX 75083

*May not be reproduced or copied*