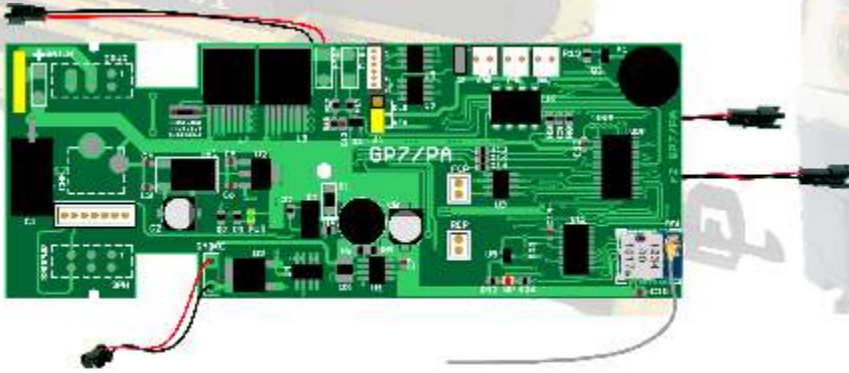


AirWire®

DROP-INS™

New and Improved! USA-Trains GP7/9, and PA/B Drop-In™ Decoder



- ▶ Drop-In Simplicity - Uses Original Factory Wiring
- ▶ Includes Phoenix Coupler Drivers and sockets
- ▶ Socket for Phoenix P8 Sound Module
- ▶ Built-in Battery Charging Jack
- ▶ Includes Switches For Sound and Decoder Power
- ▶ 17 Independent Radio Frequencies
- ▶ Remote Frequency Setting
- ▶ 3 New Light Driver Outputs Including Ditch Lights
- ▶ 120 Watt Protected Motor Drive
- ▶ Easily Fine Tune Motor Performance
- ▶ Independent Control Of All Lighting
- ▶ 3A Smoke Driver With Programmable Shutoff
- ▶ Complete Control of All P8 Sound Functions
- ▶ Includes Connectors for Battery and Charger
- ▶ Works With All AIRWIRE Wireless Throttles
- ▶ Updated Installation and Operation Guide

\$149*

Available Now!

New Architecture - New Features - New Benefits

Selectable Factory Light Wiring - A unique jumper provides a simple way to change the decoder to use the factory wiring found in both the first generation GP7/9 locos or the current production version. No changes to the factory wiring are required. This feature is found only on the new 2017 Drop-In decoder.

New Phoenix Coupler Drivers Included - The decoder has two sockets that match the plugs on the new Phoenix couplers. Now it is easy and convenient to add remote couplers to your locomotive which will open up a whole new world of garden railroad operation. The NW2 decoder eliminates the need for a separate coupler controller module thus lowering the cost of adding this exciting new capability. The front coupler is activated with throttle function 3 and the rear coupler is activated with throttle function 13. Of course you may reassign them if desired.

New Radio Module - The Drop-In decoder has a new radio module that features improved performance and longer range. You may use either the included whip antenna or an optional remote antenna for better range.

Remote Frequency Setting - The NW2 Drop-in includes the popular feature of frequency setting direct from the throttle. There is no need to open the locomotive to set the frequency. A total of 17 frequencies ensure jam-free operation and quick response to function commands.

Independent Control Of Locomotive Lighting - In addition to the front and rear headlights, the new decoder allows independent control of the cab interior lights. These lights are all preassigned to specific throttle function keys or you can change the assignments to whichever function key needed.

Programmable Smoke Timer - New to this series is a smoke generator driver that now includes a programmable auto-off feature. After the user programmable time expires, the smoke generator is automatically shut off.

3 New Lighting Outputs - Besides the traditional factory lighting for headlights, cab lights, markers and number boards, the new Drop-In adds a pair of ditchlight drivers, plus 2 more light drivers are available for adding exciting lighting effects to your locomotive. The ditchlights are fully configurable for flash rate, timeout after trigger and operation mode. There are 15 special effects that may be applied to either of the two extra light drivers. The drivers are rated at 1 Amp each. However, LEDs are recommended for their great brightness and to minimize battery consumption.