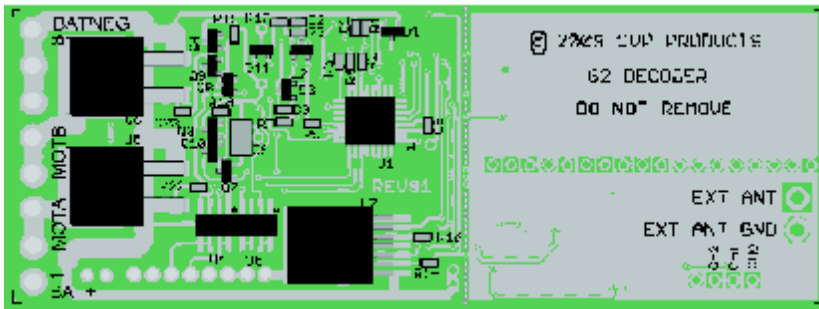


Bottom View Of Board



Cut Location

Step 1: Locate the Cut Location

The break location is marked with a series of small holes near the center of the board.

Locate the break point on the bottom of the board. Several of the holes actually provide connection between the two halves but don't worry, the cable will reconnect them.

Step 3: Cut the Board Apart

Using the row of holes as a guide, cut the board apart. Be careful not to damage components adjacent to the cut location. Cut all the way through the board. Don't stop half way and try to snap the board apart. This sort of flexing will damage the board and the small components. There is no need to smooth or clean the edges.

Split Board Kit Instructions

Please Read Carefully!

The hardest part of using this split kit is following the instructions. The second hardest part is splitting the board into two halves.

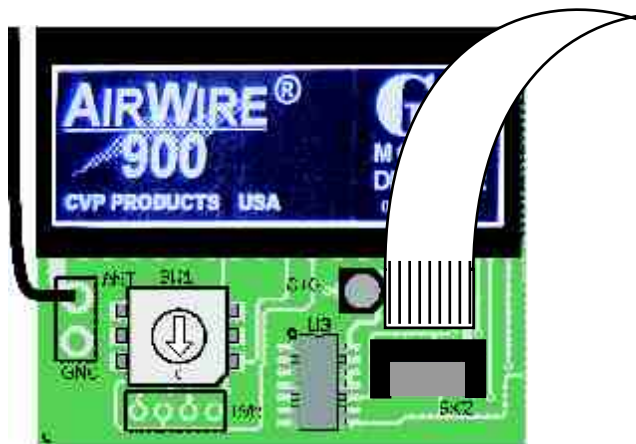
Follow these steps to insure safe separation of the two halves.

Step 2: Obtain the Proper Tools

Do not attempt to snap the board in half. This will likely cause damage. Instead, use a razor saw or a Dremel tool with a large cutting disk. A sharp X-Acto knife can also be used to make repeated cuts across all the holes.

Step 4: Connect Flex Cable

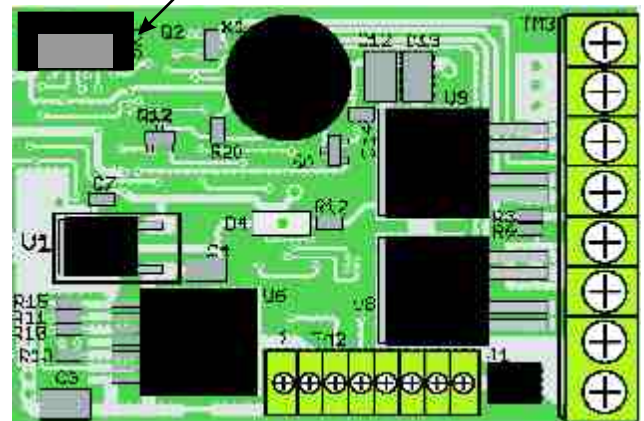
The small "C" shaped cover over the socket is actually the locking clip. Gently lift it up - it won't go far. Insert the flex cable as shown with the silver contacts as shown. Make sure the cable is squarely in the socket before locking. Push down on the locking clip to hold the cable in place. Be careful handling the board and cable since it is not too difficult to pull the cable out of the socket.



Silver contacts face away from board

Silver contacts face towards board center

Locking cover



CVP Products
P.O. Box 835772
Richardson, TX 75083

www.cvpusa.com
972-238-9966